



AES aux Urgences:

A l'ère du PrEP, faut-il s'attendre à une réduction ou une augmentation du nombre de cas?

Pr Enrique Casalino

Groupe Hospitalier Paris Nord Val de Seine
SAU Bichat – SAU Beaujon – SMUR Beaujon



Trends in Condom Use and Risk Behaviours after Sexual Exposure to HIV: A Seven-Year Observational Study

**Enrique Casalino^{1,2,3,4*}, Christophe Choquet^{1,3}, Agathe Leleu^{1,2}, Romain Hellmann^{1,3},
Mathias Wargon^{2,3,4}, Gaelle Juillien^{1,3}, Yazdan Yazdanpanah⁵, Elisabeth Bouvet⁵**

1 Assistance Publique-Hôpitaux de Paris (AP-HP), University Hospital Bichat-Claude Bernard, Emergency Department, Paris, France, **2** Université Paris Diderot, Sorbonne Paris Cité, EA 7334 «Recherche clinique coordonnée ville-hôpital, Méthodologies et Société (REMES)», Paris, France, **3** Study Group for Efficiency and Quality of Emergency Departments and Non-Scheduled Activities Departments, Paris, France, **4** Hôpital Saint Camille, Bry-sur-Marne, France, **5** Assistance Publique-Hôpitaux de Paris (AP-HP), University Hospital Bichat-Claude Bernard, Infectious and Tropical Diseases Department-AIDS Clinic, Paris, France



Results

Characteristics of the study population

We enrolled 1851 sexual exposures to HIV. Main characteristics of the entire population were: age (years) 32.2 ± 9 (average 32); males 1408 (76%), females 443 (23.9%); MSM 788 (42.6%), Heterosexuals 1063 (57.4%); HIV positive status of sexual partner 232 (12.5%), negative or unknown 1619 (87.5%); Condom use: no 845 (45.7%), yes 1006 (54.3%); Arrival time to ED: 8am to 6pm: 768 (41.8%), 6pm to noon: 680 (37%), and noon to 8am: 391 (21.3%); Delay between SE and arrival in ED: <12 h: 1022 (56.1%), 12 h to 48 h: 497 (27.3%), >48 h: 303 (16.6%); Type of intercourse AR 442 (23.9%), AI 314 (17%), VR 393 (21.2%), VI 537 (29%), OR 105 (5.7%), OI 51 (2.8%), Other/Unknown 9 (0.5%).

PEP was prescribed for 1349 (72.9%).



Results

Characteristics of the study population

We enrolled 1851 sexual exposures to HIV. Main characteristics of the entire population were: age (years) 32.2 ± 9 (average 32); males 1408 (76%), females 443 (23.9%); MSM 788 (42.6%), Heterosexuals 1063 (57.4%); HIV positive status of sexual partner 232 (12.5%), negative or unknown 1619 (87.5%); Condom use: no 845 (45.7%), yes 1006 (54.3%); Arrival time to ED: 8am to 6pm: 768 (41.8%), 6pm to noon: 680 (37%), and noon to 8am: 391 (21.3%); Delay between SE and arrival in ED: <12 h: 1022 (56.1%), 12 h to 48 h: 497 (27.3%), >48 h: 303 (16.6%); Type of intercourse AR 442 (23.9%), AI 314 (17%), VR 393 (21.2%), VI 537 (29%), OR 105 (5.7%), OI 51 (2.8%), Other/Unknown 9 (0.5%).

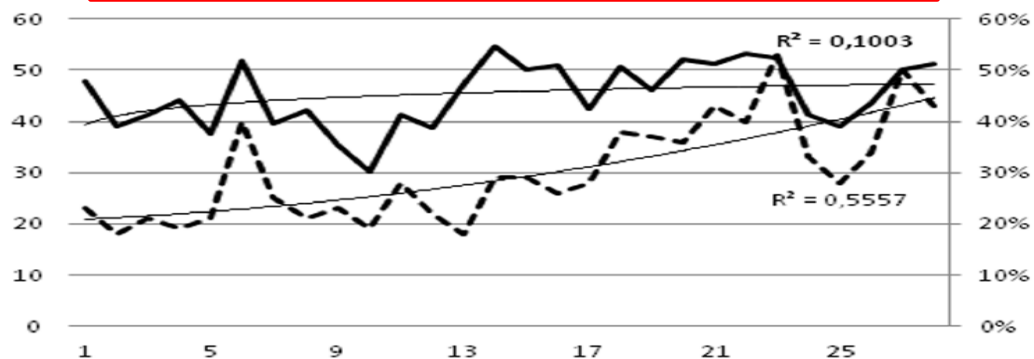
PEP was prescribed for 1349 (72.9%).

Table 2. Predictors of protected sexual intercourse (n = 1851).

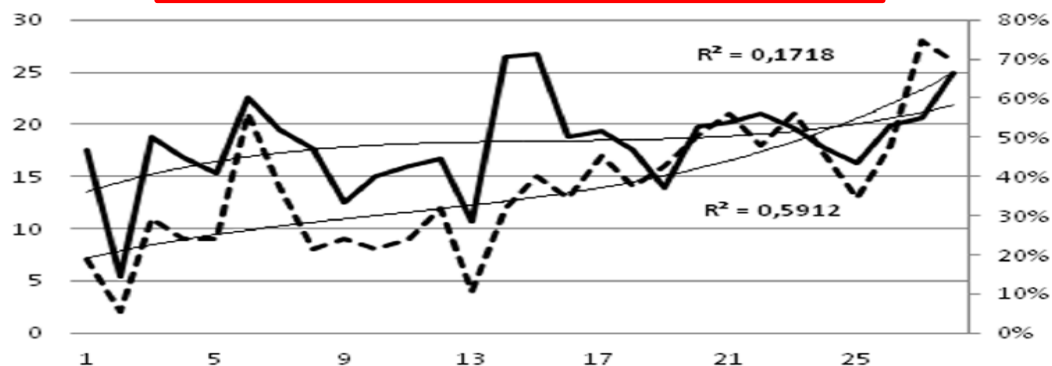
	Unadjusted Logistic Regression			Multivariate Logistic Regression	
	Condom use		P	OR (95% CI)	P
	No (n (%))	Yes (n (%))			
Age groups			0.9		
<20	35 (46.7)	40 (53.3)			
≥20-<30	387 (46.6)	444 (53.4)			
≥30-<40	272 (44.2)	343 (55.8)			
≥40	151 (45.8)	179 (54.2)			
Sex			0.2		
Female	214 (48.3)	229 (51.7)			
Male	631 (44.8)	777 (55.2)			
Sexual type			0.003		<0.0000001
MSM	391 (49.6)	397 (50.4)		1	
Heterosexual	454 (42.7)	609 (57.3)		1.32 (1.07–1.63)	
Year			0.01		
2006	81 (43.1)	107 (56.9)			
2007	107 (43.5)	139 (56.5)			
2008	92 (36.4)	161 (63.6)			
2009	102 (51)	98 (49)			
2010	139 (47.9)	151 (52.1)			
2011	169 (49.7)	171 (50.1)			
2012	155 (46.4)	179 (53.6)			
Arrival time to ED			0.005		0.006
8 am to 6 pm	372 (48.4)	396 (51.6)		1	
6 pm to noon	316 (46.5)	364 (53.5)		1.2 (1.05–1.36)	
Noon to 8 am	151 (38.6)	240 (61.4)		1.43 (1.36–1.63)	
Time delay nO-SE to ED			0.00006		0.000002
<12 h	424 (41.5)	598 (60.5)		1	
12 to 48 h	243 (48.9)	254 (51.1)		0.76 (0.67–0.86)	
>48 h	166 (54.8)	137 (45.2)		0.57 (0.51–0.65)	
Sexual intercourse details					
Oral	143 (91.7)	13 (8.3)	<0.00001	1	<0.000001
Anal	330 (43.7)	426 (53.3)		4.36 (3.24–5.86)	
Vaginal	365 (39.3)	565 (60.7)		19 (14.2–25.6)	
Receptive	376 (45)	459 (55)	<0.000001		
Insertive	319 (37.5)	532 (62.5)			
AR	196 (44.3)	246 (55.7)	<0.000001		
AI	134 (42.7)	180 (57.3)			
VR	180 (45.8)	213 (54.2)			
VI	185 (34.5)	352 (65.6)			
OR	97 (92.4)	8 (7.6)			
OI	46 (90.2)	5 (9.8)			
HIV status of sexual partner			0.5		
Positive	43 (49.4)	44 (50.6)			
Unknown or negative	438 (45.6)	523 (54.4)			
PEP prescribed in the ED			0.4		
no	216 (48.1)	233 (51.9)			
yes	604 (44.8)	745 (55.2)			
no data available	25 (47.2)	28 (52.8)			

Number of cases by trimester

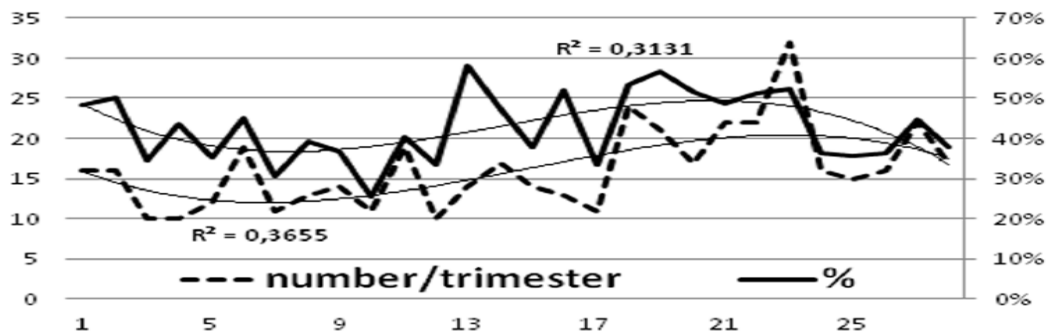
Sexual intercourse without condom use. All patients (n= 1851)



Sexual intercourse without condom use. MSM (n= 788)



Sexual intercourse without condom use. Heterosexuals (n= 1063)



--- number/trimester — %

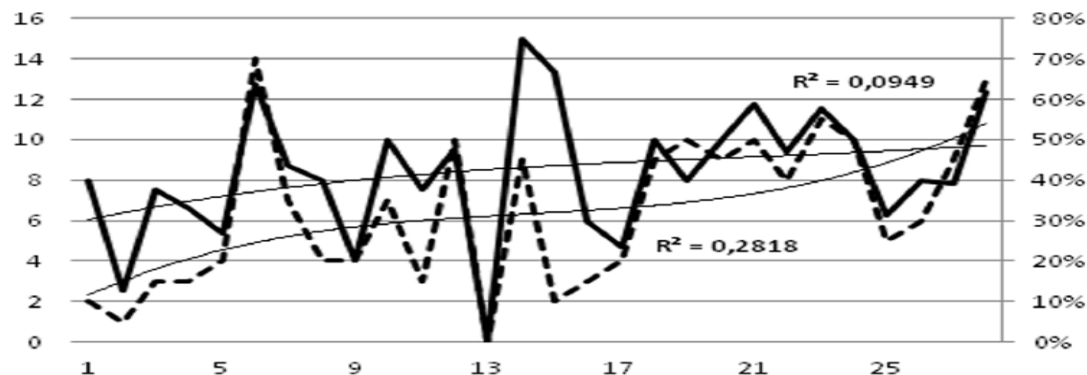
Study period (by trimester number)

Percentage declaring unprotected sexual intercourse

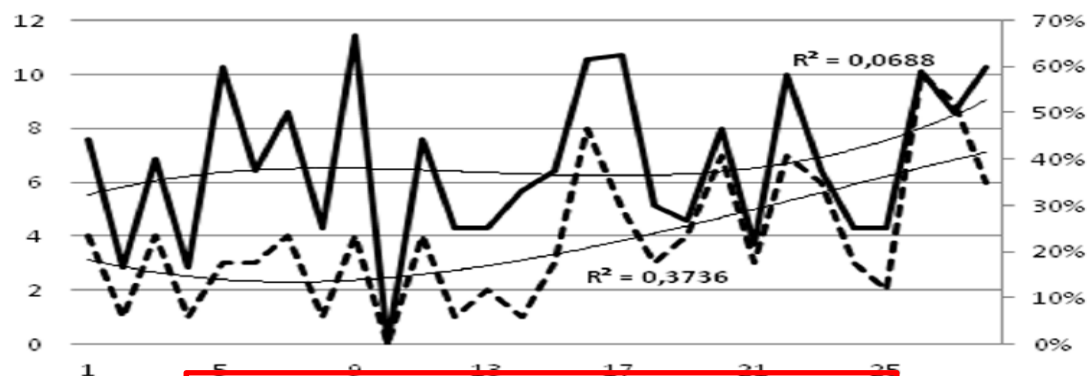
Number of cases by trimester

Percentage declaring unprotected sexual intercourse

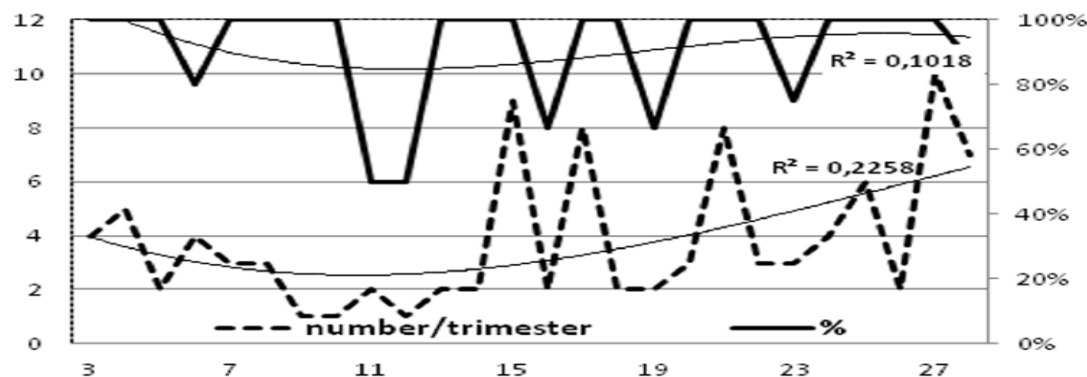
Anal receptive intercours among MSM (n= 411)



Anal insertive intercourse among MSM (n= 267)

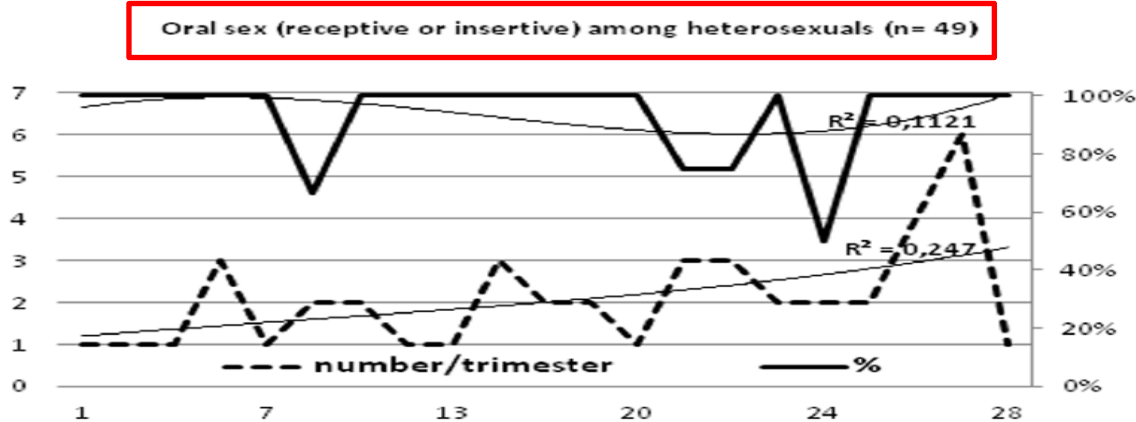
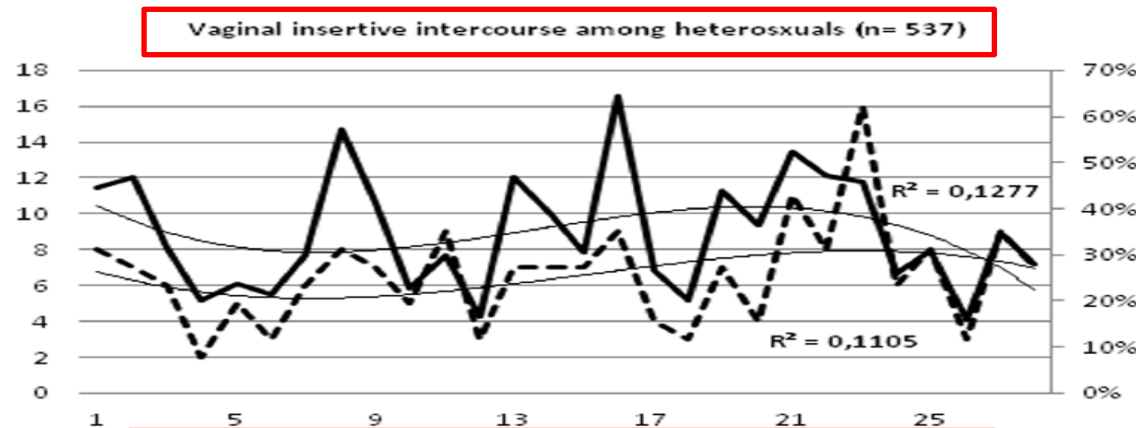
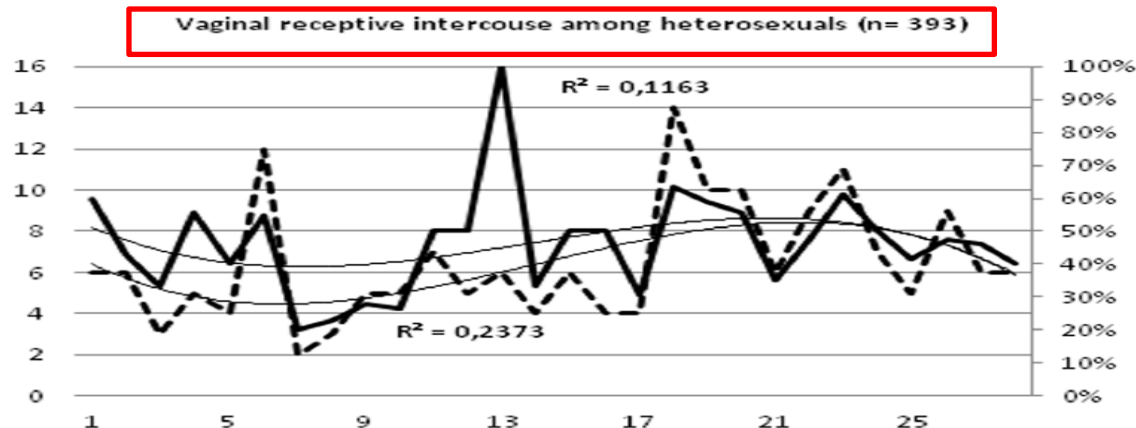


Oral sex (receptive or insertive) among MSM (n= 107)



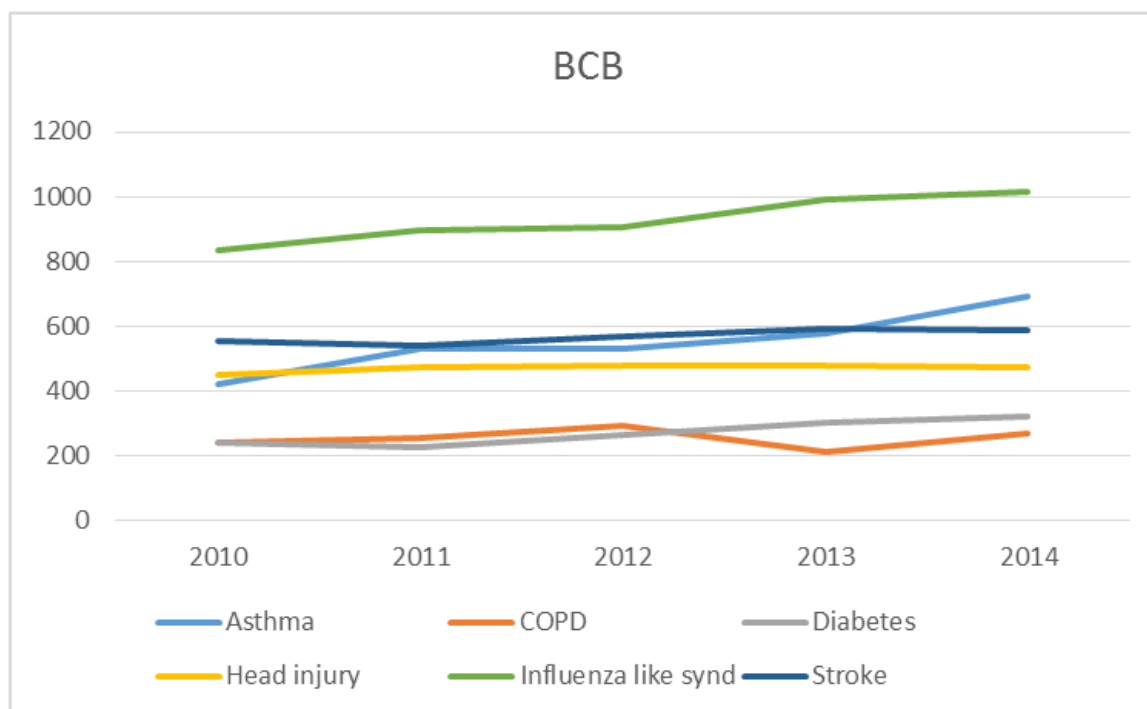
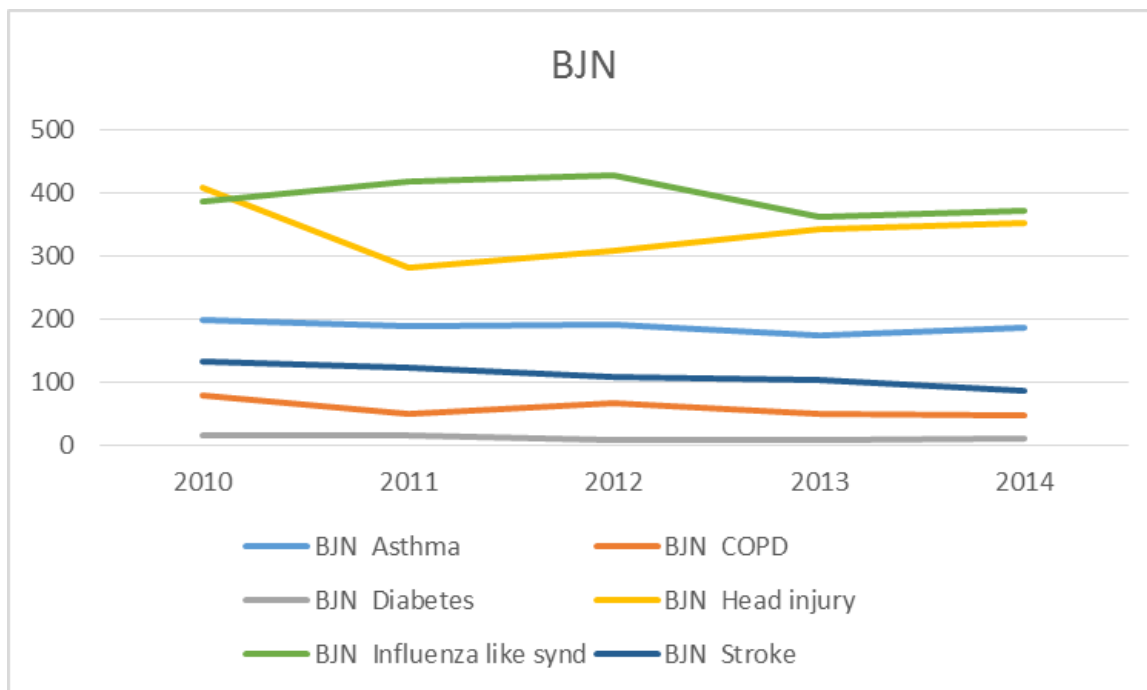
Study period (by trimester number)

Number of cases by trimester



Study period (by trimester number)

Percentage declaring unprotected sex





Available online at www.sciencedirect.com

Public Health

journal homepage: www.elsevier.com/puhe



Short Communication

An evaluation of hospital attractiveness and primary care availability leading to increasing emergency department visits



E. Casalino ^{a,b,c,d,*}, C. Choquet ^{a,c}, S. Curac ^{b,c}, L. Colosi ^{a,c}, E. Kargougou ^{b,c},
M. Ranaivoson ^{a,c}, M. Aubier ^{e,f}, R. Hellmann ^{a,c,g}

^a Emergency Department, Hôpital Bichat, Assistance Publique-Hôpitaux de Paris, Paris, France

^b Emergency Department, Hôpital Beaujon, Assistance Publique-Hôpitaux de Paris, Paris, France

^c Study Group on Efficiency and Quality in Non-scheduled Activities, Paris, France

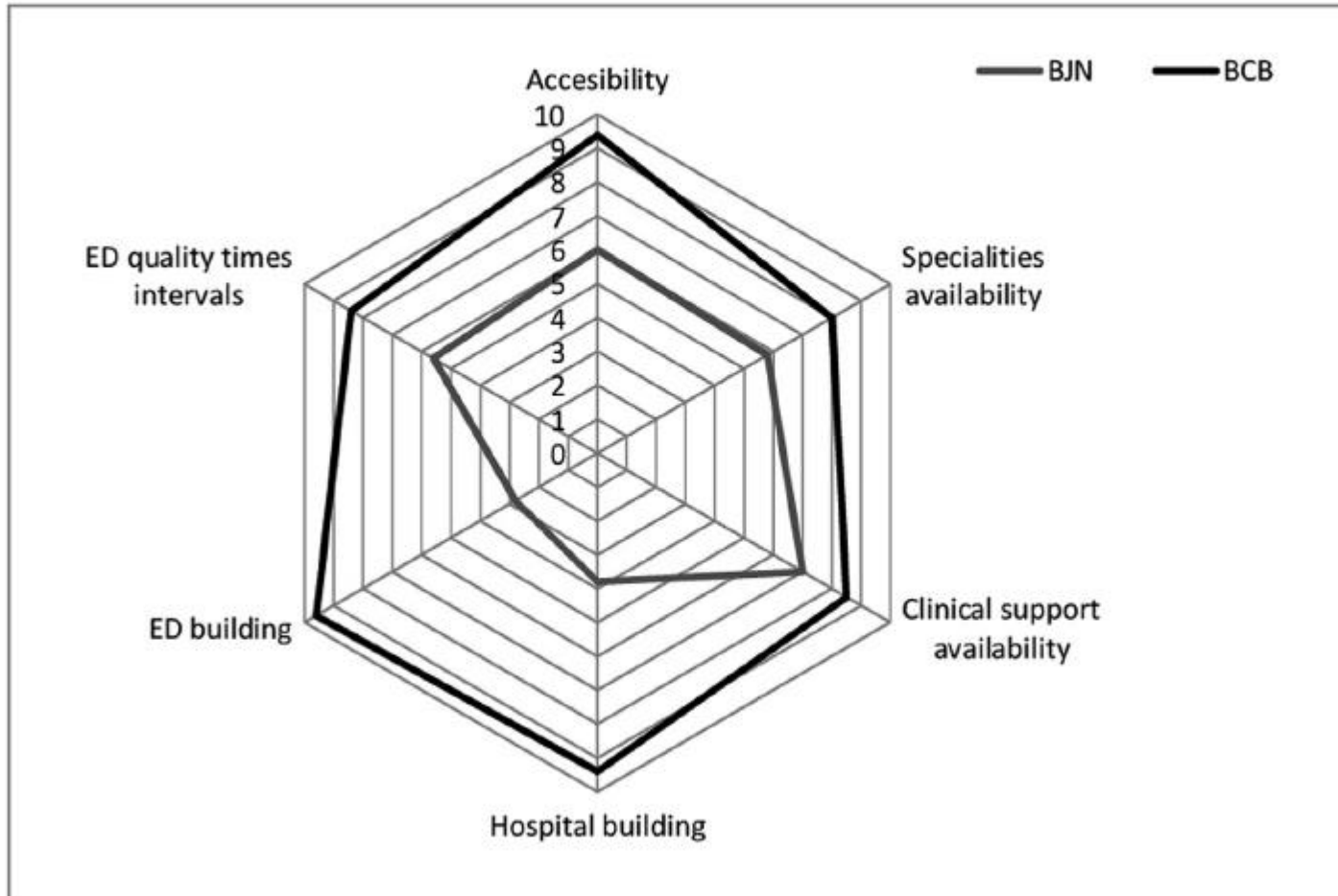
^d EA 7335 REMES, Université Paris Diderot, Sorbonne Paris Cité, Paris, France

^e Pneumology Unit, Hôpital Bichat, Assistance Publique-Hôpitaux de Paris, Paris, France

^f Unité Inserm 700, Université Paris Diderot, Sorbonne Paris Cité, Paris, France

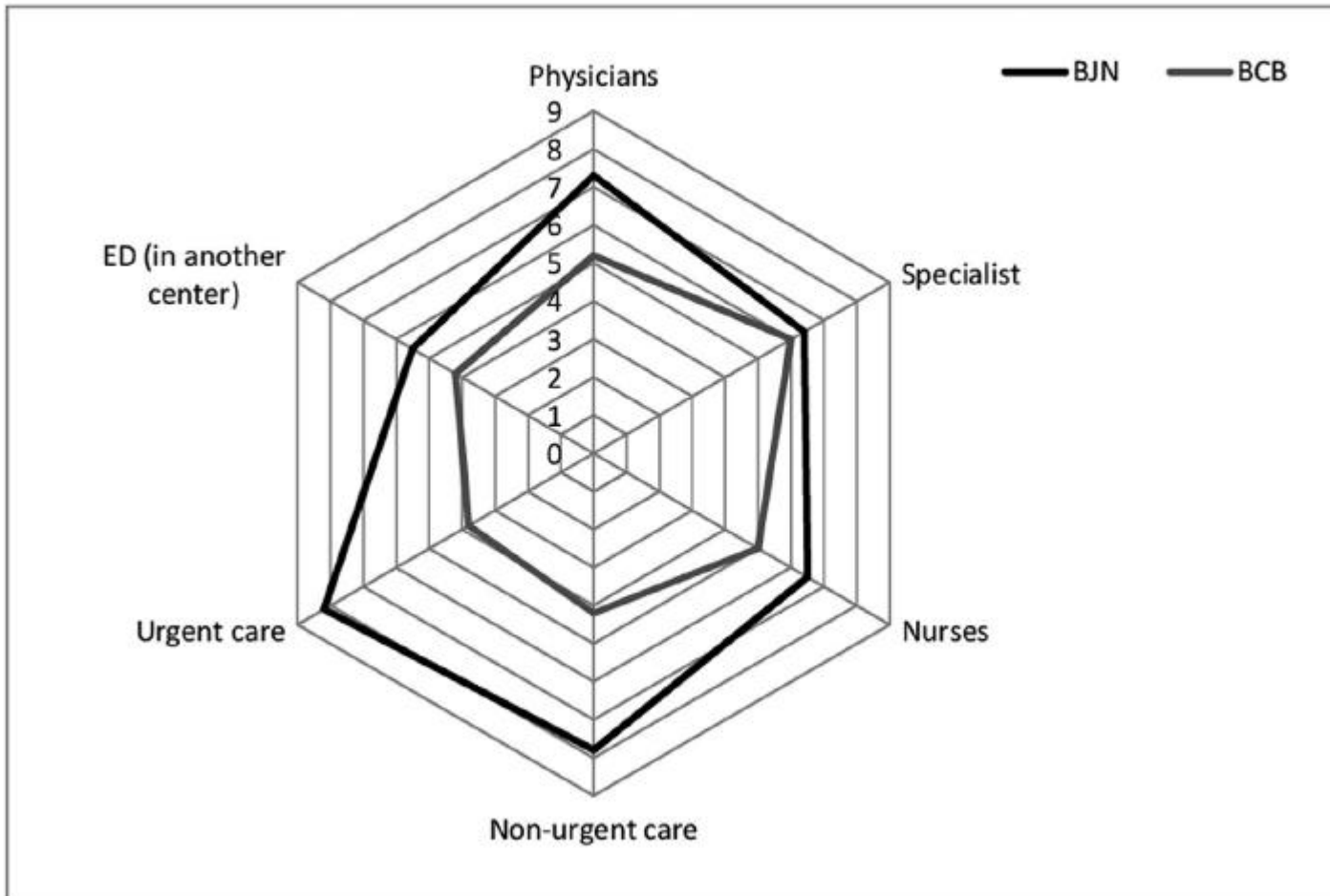
^g Agence Régionale de Santé, Ile de France, France

Emergency Department and Hospital attractiveness evaluation



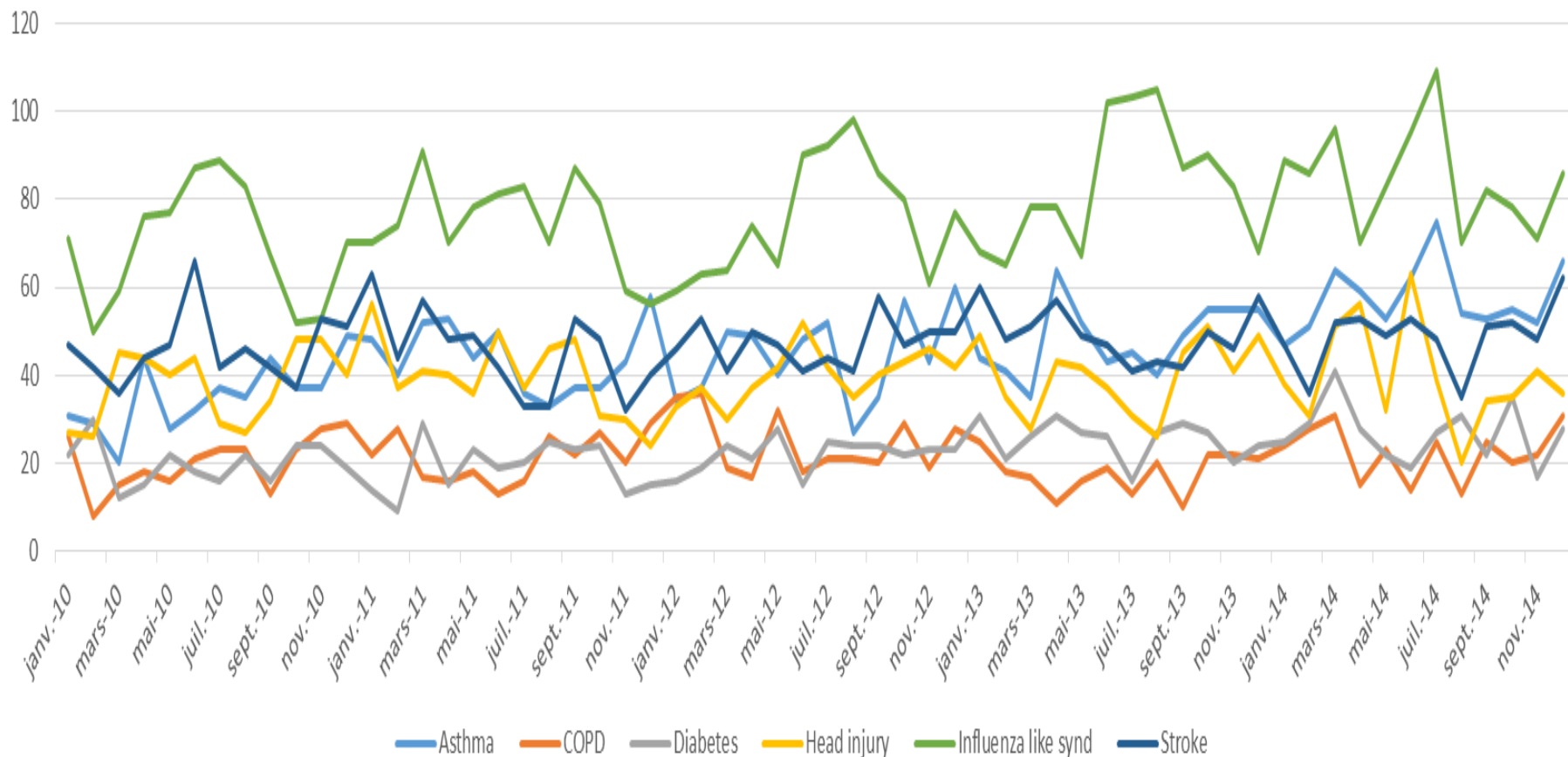


Primary care availability evaluation





Saisonalité BCB



Les défis à relever

Qualité de l'accueil

Attitude – Confidentialité - Empathie
Triage
Délais de Prise en charge (IAO, Médecin)

Qualité de la prescription

Capacité à récupérer les informations pertinentes
TROD aux urgences
Respect des recommandations
Facteurs associés à la prescription de la PPE

Performance

Délai arrivée-administration du traitement
Adéquation du tx prescrit à la situation du patient
Orientation dans une filière adaptée

Les défis à relever

Qualité de l'information

Déroulement des soins
Médicaments – Interactions médicamenteuses
Counseling (Urgences-SMIT)

**Qualité/performance
de la filière de soins**

% de patients traités
% de patients sous traitement à 7, 14, 21, 28 jours
% de patients vus en CS SMIT à 48h, 30, 60, 90 jours

Indicateurs autres

Tolérance du traitement
Satisfaction du patient à chaque étape du processus
(accueil, IAO, Médecin, Pharmacie, SMIT, ...)
Efficacité??
Retour aux urgences pour AES??